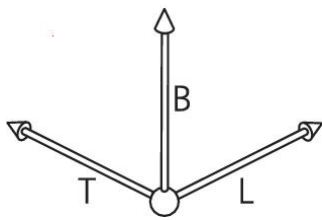
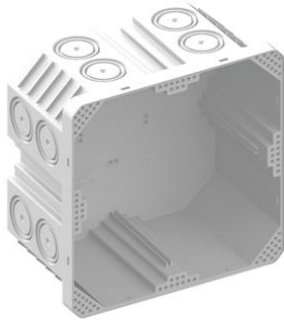


Flush-mounting back boxes with glow wire test 850°



Einlasskasten 2x2

- compatible with Feller SNAPFIX®
- Essential in timber construction
- Electrically well-insulated, shock and pressure-resistant.
- Flat bearing surface thanks to 4 support points
- For device screws Ø 3 mm
- Max. tightening torque 0.5 Nm

Article no:	9924.850
E-No:	372111229
EAN:	7611614220215
Combination	2x2
Length	130 mm
Width	130 mm
Depth	70 mm
Combination conduit entries M20/25	16
Dispatch	5

The in-wall boxes without halogene are suitable for installations on combustible materials. The boxes are produced in white polypropylene and have successfully passed the glow wire test at 850° C according to EN 60695-2-11.

- Essential in timber construction
- Electrically well-insulated, shock and pressure-resistant.
- Flat bearing surface thanks to 4 support points
- compatible with Feller SNAPFIX®

