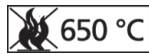
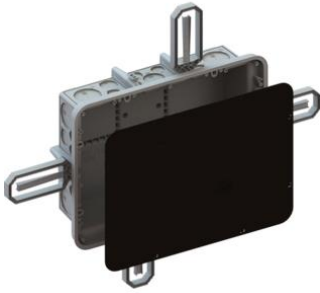


Extra-large flush-mounted junction boxes with Prefix® system



Extra-large flush-mounted junction boxes with Prefix® system

Article no:	9917.40
E-No:	155001908
EAN:	7611614261881
Length	400 mm
Width	300 mm
Depth	120 mm
Tube entries up to M25	16
Tube entries up to M32	8
Tube entries up to M40	2
Tube entries up to M50	8
Extensive pull-out apertures	10
Intake for Prefix	6
Dispatch	10

The Prefix® installation system with its well-proven wing brackets allows quick, easy and precise installation on the rebar, without support element, before the front formwork is pressed against it. The wing brackets are snapped into place on the appropriate protrusions. The spring-loaded Prefix® wing brackets build up a high pressure when pushed back by the front formwork, keeping the junction box pressed against the formwork and ensuring the wall will look good, even in the case of exposed concrete.

- Fast and easy installation on opposing formwork without support element and abutment
- Holding in place using the Prefix® installation technology leaves both hands free for securing with tie wires
- For installation in exposed concrete, pressed against the front formwork
- Prefix® wing brackets and plastering cover included in the set
- Increased stability
- Stabilisation frame included
- Conduit markings for drilling diameters

