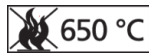
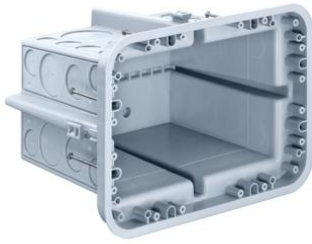


## Extra-large flush-mounted junction boxes



### Extra-large flush-mounted junction boxes

<b>Article no:</b>	<b>9916.21</b>
E-No:	155003908
EAN:	7611614261751
Length	250 mm
Width	180 mm
Depth	185 mm
Tube entries up to M20	4
Tube entries up to M25	20
Tube entries up to M32	8
Tube entries up to M40	8
Tube entries up to M50	4
Extensive pull-out apertures	8
Intake for Prefix	4
Number of nails	8
Dispatch	5

The extra-large junction boxes are designed as a modular system: two alternative base units are available - one with a smaller and one with a greater depth - and the electrician can choose from a range of matching extension pieces (for extra depth), plastering covers, screwed-on covers, waterproof covers and universal covers.

- Quick and secure installation using pre-inserted nails
- Increased robustness
- Conduit markings for drilling diameters
- Stackable

