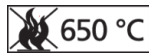
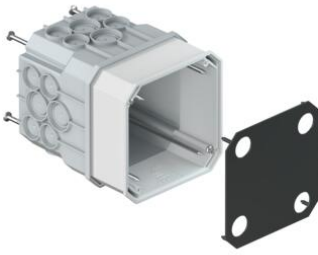


## Flush-mounted junction boxes for flexible plastic conduits (KRF or KRFG)



### Flush-mounted junction box - 145mm

- For wood and steel formwork on in-situ concrete and for flush-mounted (masonry) installations
- With internally fitting cover as adhesive attachment surface
- Where fixing to vertical formwork and using adhesive to attach, the box must be mounted on a telescopic support (item no. 9957)
- For loose terminals up to 4 mm<sup>2</sup>

<b>Article no:</b>	<b>9908.01.21</b>
E-No:	155110509
EAN:	7611614274409
Length	115 mm
Width	115 mm
Depth	145 mm
Break-out openings Ø 20 mm	16
Combination conduit entries M20/25	8
Number of nails	4
Dispatch	5

Each flush-mounted junction box has a large number of break-out conduit inlets. They are equally suitable for use with flexible plastic conduits of the corrugated (KRFG) or the smooth (KRF) type. The electrician can easily and quickly insert the conduits into the box or pull them through.

