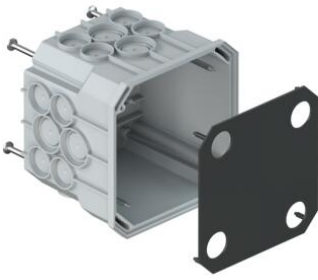


Flush-mounted junction boxes for flexible plastic conduits (KRF or KRFG)



Flush-mounted junction box - 101mm

- For wood and steel formwork on in-situ concrete and for flush-mounted (masonry) installations
- With internally fitting cover as adhesive attachment surface
- Where fixing to vertical formwork and using adhesive to attach, the box must be mounted on a telescopic support (item no. 9957)
- For loose terminals up to 4 mm²

Article no:	9908.01
E-No:	155010898
EAN:	7611614037493
Length	115 mm
Width	115 mm
Depth	101 mm
Break-out openings Ø 20 mm	16
Combination conduit entries M20/25	8
Number of nails	4
Dispatch	30

Each flush-mounted junction box has a large number of break-out conduit inlets. They are equally suitable for use with flexible plastic conduits of the corrugated (KRFG) or the smooth (KRF) type. The electrician can easily and quickly insert the conduits into the box or pull them through.

