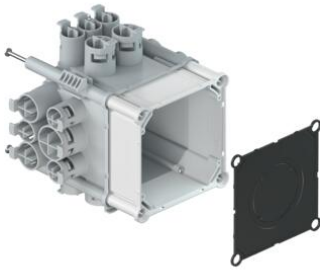


Flush-mounted junction boxes for flexible corrugated plastic conduits (KRFG)



Flush-mounted junction box - 160mm - for flexible corrugated plastic conduits (KRFG)

- Suitable for installation in concrete, masonry and cavity walls
- Easy conduit entries, no conduits in the interior
- 8 x M25 conduit entries, more than any other
- Prefix® connection detail to aid fastening to reinforcement bars
- Completely smooth inner surface, no risk of injury
- Optimised cross-shaped projections sealing conduit entry locations - easy to knock out, even when warm
- Optimised tying wire lugs for securing cables



Article no:	9907.10.21
E-No:	155111509
EAN:	7611614274416
Length	115 mm
Width	115 mm
Depth	160 mm
Impact coupling M20	12
Impact coupling M25	8
Impact coupling M32	2
Intake for Prefix	2
Number of nails	4
Dispatch	5

Flush-mounted junction boxes with KRFG technology are specially optimised for wiring using KRFG (flexible corrugated plastic) conduits. The specially designed conduit inlets can resist the highest pull-out forces. The conduits can also be secured using rebar ties or cable ties. This enables the electrician to have confidence that the conduits will still be in place after concreting.

- Easy conduit entries, no conduits in the interior
- 8 x M25 conduit entries, more than any other
- Easy installation in hollow ceilings and hollow floors
- Prefix® connection detail to aid fastening to reinforcement bars
- Completely smooth inner surface, no risk of injury
- Optimised cross-shaped projections sealing conduit entry locations - easy to knock out, even when warm
- Optimised tying wire lugs for securing cables

